



E3022-15

RRES 90061

AMS 2647

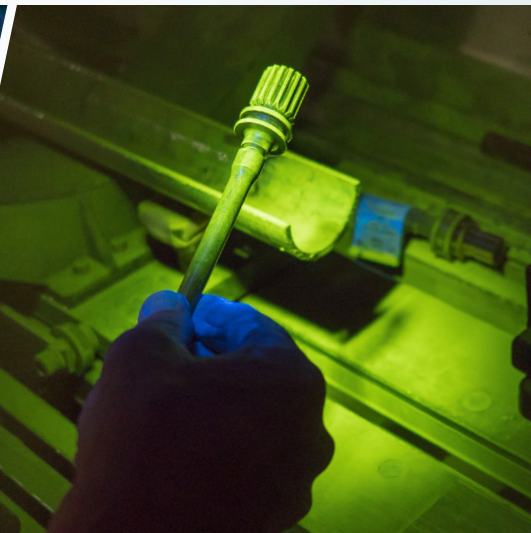
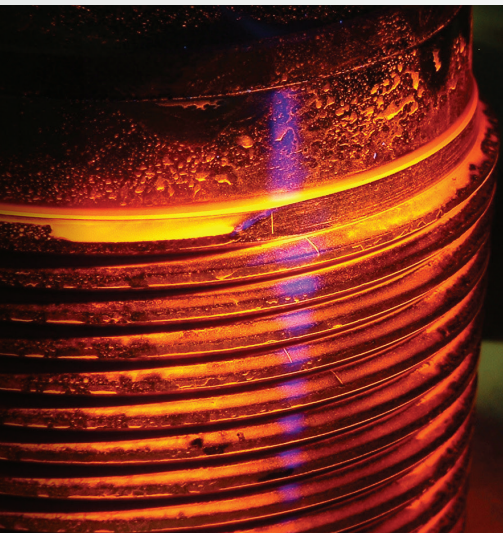
EN ISO 3059

CEN/TR 16638



NDT

FLUORESCENT INSPECTION PRODUCTS



- ▶ **NEW** IP RATED LAMPS
- ▶ LED UV-A LAMPS
- ▶ AEROSPACE COMPLIANT LAMPS
- ▶ LED BLUE LIGHT LAMPS
- ▶ OVERHEAD FLOOD LAMPS
- ▶ DIGITAL RADIOMETERS

Spectro-UV

Setting the standard in NDT inspection lamps.

NDT plays a crucial role in everyday life. We are proud to manufacture the highest quality medium and high-intensity compliant inspection lamps and products for use in liquid penetrant and magnetic particle NDT.

Meeting the Standard in NDT:

Many of the Spectroline® brand products in this catalog are specifically engineered to meet ASTM E3022-15 and EN ISO:3059 standards. Additionally, we have developed many of our lamps to meet the strict requirements for RRES 90061 (Rolls-Royce), and to meet the regulations for safety in the Aerospace sector. Spectroline® remains at the forefront of developing safe NDT products for MPI and LPI around the world.

Global Leaders:

Our products are utilized for hundreds of markets and applications that demand uncompromising quality and reliability. Spectroline® lamps and radiometers are widely used by technicians in the field around the globe – including the military and aerospace sectors, as well as transportation, oil and gas, mining, fabrication, NDT inspection shops, alternative energy, and more.

NDT INDUSTRIES



AEROSPACE



ALTERNATIVE
ENERGY



AUTOMOTIVE



FABRICATION



MILITARY



MINING



NDT INSPECTION
SHOPS



OIL & GAS



PIPELINE



TRANSPORTATION/
RAILWAY

Our **ASTM** and **Rolls-Royce** compliant inspection lamps are *unmatched* in quality.



E3022-15

RRES
90061

AMS
2647

EN ISO
3059

CEN/TR
16638

SPECTROLINE

CONTENTS

DIGITAL RADIOMETERS

ANSI and NIST Traceable

| | |
|-----------------|-----|
| AccuPRO™ SERIES | 4-5 |
| AccuMAX™ | 6-7 |

LED UV-A LAMPS

Series of EN ISO:3059, ASTM E3022-15, and RRES 90061 Lamps for NDT Inspections

HANDHELD LAMPS

| | |
|---------------------|-------|
| uVision™ 365 SERIES | 8-9 |
| VINTAGE™ 365 SERIES | 10-11 |
| TRITAN™ 365 SERIES | 12-13 |

OVERHEAD LAMPS

| | |
|-----------------|-------|
| EDGE™ 13 SERIES | 14-15 |
|-----------------|-------|

FLASHLIGHT/PORTABLE LAMPS

| | |
|----------------------|-------|
| CLARITY™ 365 SERIES | 16-17 |
| OPTI-LUX™ 365 SERIES | 18 |
| OPTIMAX™ 365 | 19 |

LED BLUE LIGHT LAMPS

450 nm Lamps for Fluorescent Inspections

| | |
|--------------------|-------|
| TRITAN™ 450 SERIES | 20-21 |
| OPTIMAX™ 450 | 22-23 |

TRADITIONAL BULB UV-A LAMPS

Affordable, Reliable NDT Classics

| | |
|--------------------|----|
| MAXIMA | 24 |
| SUPERFLOOD™ SERIES | 25 |

REPLACEMENT PARTS AND ACCESSORIES

| | |
|---|----|
| UV PROTECTIVE EYE AND FACE WEAR | 26 |
| UV-A LED Replacement Bulb for Traditional Lamps: VIVID™ SERIES | 27 |

| | |
|---|----|
| Sample Certificates of Conformance & Validation Reports | 28 |
| Customer Service/Support | 29 |

PROUD MEMBERS OF:



AccuPRO™ SERIES

Digital Radiometer/Photometers

The **AccuPRO™ XP-2000** readout unit features a single dual-wavelength sensor detector designed to measure both ultraviolet and visible light, and is compliant with ASTM 2297. The **AccuPRO™ Plus XP-4000** features a single 3-in-1 multi-purpose sensor that measures ultraviolet, visible and blue light.



LARGE LCD SCREEN
4-digit autoranging display

PROTECTIVE RUBBER HOUSING
Rugged meter for better grip and to help prevent accidental breakage

THREE-BUTTON INTERFACE
Toggle between light measurement modes

MULTI-WAVELENGTH SENSOR
Sealed sensor with water-resistant housing

KEY FEATURES:

- ▶ Overall accuracy greater than $\pm 5\%$ per NIST standards
- ▶ Superior band-pass interference filter provides excellent cosine response
- ▶ One-touch PEAK with reset functions
- ▶ User-defined power save and automatic shutoff
- ▶ Multi-wavelength sensor directly attached to meter by 3 ft (0.9 m) cord
- ▶ Convenient on-board recharging
- ▶ Powered by four rechargeable “AAA” nickel-metal hydride batteries (included)
- ▶ Comes complete with AC charger and padded carrying case

| | | |
|--------------------|----------------------|-------------------|
| UV-A LIGHT | VISIBLE LIGHT | BLUE LIGHT |
| XP-2000 XP-4000 | XP-2000 XP-4000 | XP-4000 |

MULTILINGUAL – now includes more languages. User-selectable, multilingual display settings at any operational level. Choose from English, French, German, and Spanish.



Technical Features

| Readout Unit | |
|--------------------------------|--|
| Resolution | 4-digit autoranging display |
| Screen | 128 x 64 dot pixel chip on glass STN transmissive monochrome LCD 2.25 in (5.7 cm) diagonal illuminated (backlit) |
| Read Update | 2 Hz |
| Overall Accuracy | Better than $\pm 5\%$ with reference to NIST standards |
| Temperature Coefficient | $\pm 0.025\%/^{\circ}\text{C}$ (0 to 50°C) |
| Power Requirements | Four "AAA" nickel-metal hydride batteries (rechargeable). AC charger included. <i>Available in 120V, 230V, 240V or 100V versions.</i> |

| Dimensions | |
|------------------|------------------|
| Length | 6.0 in (15.2 cm) |
| Width | 3.0 in (7.6 cm) |
| Thickness | 1.0 in (2.5 cm) |
| Weight | 8 oz (227 g) |

| Sensor Detector | |
|------------------|-----------------|
| Length | 3.0 in (7.6 cm) |
| Width | 2.0 in (5.1 cm) |
| Thickness | 0.5 in (1.3 cm) |
| Weight | 5.6 oz (159 g) |

| Spectral Range | |
|--------------------------|---------------------------|
| UV-A Sensor | 320-400 nm |
| Visible Sensor | 460-675 nm |
| Blue Light Sensor | 410-475 nm (XP-4000 only) |

XP-2000 AccuPRO™
Dual Sensor (UV-A/VIS)
 Sensitive to UV and Visible Light

ASTM 2297
 Compliant

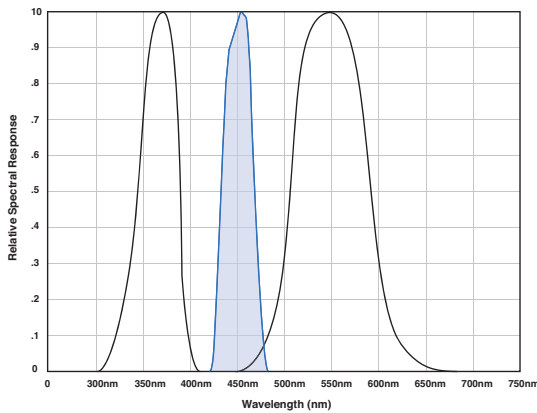
Wavelength/Measurement Range
 UV-A (365 nm) Irradiance 0-100 mW/cm²
 Visible (555 nm) Illuminance 0-5,382 Lux (0-500 fc)

XP-4000 AccuPRO™ Plus
3-in-1 Sensor (UV-A/VIS/Blue)
 Sensitive to UV, Visible and Blue Light

Conforms to
CEN/TR 16638

ASTM 2297
 Compliant

Wavelength/Measurement Range
 UV-A (365 nm) Irradiance 0-100 mW/cm²
 Visible (555 nm) Illuminance 0-5,382 Lux (0-500 fc)
 Blue (450 nm) 0-100 mW/cm²



The **AccuPRO™** meter features a dual wavelength UV/visible sensor, while the **AccuPRO™ Plus** (shown) features a 3-in-1 sensor that measures UV, visible and blue light.



AccuMAX™

Advanced Digital Radiometer/Photometer Kit

The MOST advanced, microprocessor-controlled readout system. The **AccuMAX™ XRP-3000** is compact, lightweight and battery-operated for convenient use in the factory, field or any other location where measurements need to be taken. Measures both ultraviolet and visible light. Complies with ASTM specifications for MPI and FPI and the ASTM 2297 standard. Specially engineered for NDT applications.



KEY FEATURES:

- ▶ Microprocessor-controlled readout unit with dual-wavelength sensor detector
- ▶ Superior bandpass interference filter
- ▶ Choice of direct or USB connection between sensor detector and readout unit
- ▶ Excellent cosine response
- ▶ Sealed sensor housing and USB connection with water-resistant adapter

MULTILINGUAL – now includes more languages. User-selectable, multilingual display settings at any operational level. Choose from English, French, German, and Spanish.



AccuMAX™ XS-555/L Luminance Sensor Detector

The perfect accessory for the AccuMAX Series meter. Ideal for technicians performing radiographic examinations. Meets ASTM E1742 standard.

The AccuMAX XS-555/L luminance sensor detector measures the brightness of a visible light source and, unlike many competitive units, allows the user the choice of displaying the results in three distinct units of measure: candelas per square meter (cd/m²), candelas per square foot (cd/ft²) and footlamberts (fL).



Dimensions

Height 3.2 in (8.1 cm)
 Length 3.0 in (7.6 cm)
 Width 2.1 in (5.3 cm)
 Weight 6.4 oz (181 g)

Luminance Range

0 - 1,000,000 cd/m²
 0 - 90,000 cd/ft²
 0 - 285,000 fL



Technical Features

Readout Unit (XR-1000)

| | |
|--------------------------------|--|
| Resolution | 4-digit autoranging display |
| Screen | 128 x 64 dot pixel chip on glass STN transmissive monochrome LCD 2.25 in (5.7 cm) diagonal illuminated (backlit) |
| Sample Rate | 7.5 Hz (single sensor) 15 Hz (dual sensor) |
| Read Update | 2 Hz |
| Overall Accuracy | Better than ± 5% with reference to NIST standards |
| Temperature Coefficient | ± 0.025%/°C (0 to 50°C) |
| Power Requirements | Two non-rechargeable 9V alkaline battery cells are included as standard |

Dimensions

| | |
|------------------|-------------------|
| Length | 7.75 in (19.7 cm) |
| Width | 4.25 in (10.8 cm) |
| Thickness | 1.25 in (3.2 cm) |
| Weight | 0.8 lb (360 g) |

Dual UV-A/Visible Sensor Detector (XDS-1000)

Irradiance Range

| | |
|-----------------------|--|
| UV-A Sensor | 0-100 mW/cm ² (0-100,000 μW/cm ²) |
| Visible Sensor | 0-5,300 lux (0-500 fc) |

Spectral Range

| | |
|-----------------------|------------|
| UV-A Sensor | 320-400 nm |
| Visible Sensor | 460-675 nm |

Dimensions

| | |
|---------------------------|-------------------|
| Length | 4.75 in (12.1 cm) |
| Width | 2.0 in (5.1 cm) |
| Thickness | 7/8 in (2.2 cm) |
| Weight | 0.22 lb (100 g) |
| USB Cable (Length) | 5 ft (1.5 m) |



XRP-3000 Kit Includes:

| | |
|--|---------|
| Water-resistant USB cable with adapter | XCB-100 |
| Rubber boot | XRB-100 |
| Carrying case | XCC-100 |



uVision™ 365 SERIES

Compliant, IP Rated, Fanless LED UV-A Lamps

The uVision™ 365 SERIES is Spectrolines innovative line of compact, broad-beam NDT handheld lamps. These lightweight yet rugged lamps boast an IP65 rating – they are dust-tight and water resistant. Using a state-of-the-art heat sink design, the uVision™ is mechanically cooled without the need for a fan. In addition to three powerful UV-A (365 nm) LEDs, it has a convenient white light LED for illuminating work areas. Compliant versions have embedded microprocessors to keep lamps within specifications.

| | | UV-365SBLC | UV-365MSBLC* | UV-365HC | UV-365MHC | UV-365ZHC | UV-365ES* | UV-365EH | UV-365MEH | UV-365ZEH | |
|---|-------------------------------------|---|--------------|---------------------------------|-----------|---------------------------------|-----------------------------------|---------------------------------|-----------|---------------------------------|--|
| TESTED TO COMPLY WITH | Rolls-Royce RRES 90061 REQUIREMENTS | ✓ | ✓ | ✗ | ✗ | ✗ | ✗ | ✗ | ✗ | ✗ | |
| | ASTM E3022-15 STANDARD | ✓ | ✓ | ✓ | ✓ | ✓ | ✗ | ✗ | ✗ | ✗ | |
| | EN ISO 3059 | ✓ | ✓ | ✓ | ✓ | ✓ | ✓ | ✓ | ✓ | ✓ | |
| Nominal Steady-State UV-A Intensity at 15 in (38 cm) | | < 5,000 $\mu\text{W}/\text{cm}^2$ | | 6,000 $\mu\text{W}/\text{cm}^2$ | | 8,000 $\mu\text{W}/\text{cm}^2$ | < 5,000 $\mu\text{W}/\text{cm}^2$ | 7,000 $\mu\text{W}/\text{cm}^2$ | | 9,000 $\mu\text{W}/\text{cm}^2$ | |
| UV-A Coverage Area at 15 in (38 cm) at minimum 1,200 $\mu\text{W}/\text{cm}^2$ | | 6 in (15 cm) Diameter | | 6.4 in (16 cm) Diameter | | 7.5 in (19 cm) Diameter | 6 in (15 cm) Diameter | 7 in (18 cm) Diameter | | 7 in (17.8 cm) Diameter | |
| Filter/Faceplate | | Faceplate with integral UV-A pass filters | | | | Standard faceplate | | | | | |
| Thermal Cut-Off Circuitry | | ✓ | | ✗ | | ✓ | ✗ | | | | |
| AC/DC Mobile Model | | ✗ | ✓ | ✗ | ✓ | ✗ | | ✓ | ✗ | | |
| Visible Light Measurement | | < 1 foot-candles (11 lux) | | | | | < 2 foot-candles (22 lux) | | | | |

*These versions are adjusted to ensure that they provide a maximum steady-state UV-A intensity of less than 5,000 $\mu\text{W}/\text{cm}^2$ at 15 in (38 cm) UV-A intensity reading taken with the Spectrolines AccuMAX™ Series meter, and is factory set to the value shown.

Each lamp is fitted with an 8-foot cord and the appropriate plug for the country of destination. An optional 20-foot cord is available. The "/20" suffix denotes the 20-foot power cord options.



Technical Features

| | | | |
|----------------------------|------------------------------------|-----------------------------------|--|
| Light Source: | (3) UV-A LEDs, (1) white light LED | White Light LED Intensity: | 400 foot-candles (4,306 lux) |
| Lamp Style: | Pistol grip | Power Requirements: | 100-120VAC / 12VDC* |
| Lamp Head Diameter: | 3.5 in (9 cm) | Battery Pack: | Type: 12V, NiMH (rechargeable) Run time: 3.5 hours continuous Charge time: 2 hours |
| Height: | 7.5 in (19 cm) | | |
| Width: | 3.5 in (8.9 cm) | | |
| Weight: | 1.9 lb (0.90 kg) | | |

*(Also available in 230V & 240V versions)



Compliant Versions*

IP65 RATED



Dust-Tight & Water Resistant



Fanless & Cool Running



Wide, Even Beam Profile



LONG-LASTING UV-A LENSES
Reduce the rate of solarization

3 UV-A LEDS
For wide area of coverage

Faceplate with INTEGRAL UV-A PASS FILTERS
Reduce visible wavelengths



ADJUSTABLE WHITE LIGHT LED
Use to locate surface flaws



BACK VIEW

SEALED CONTROL SWITCH
Grip-mounted, three-way rocker switch (white light/off/UV)

POWER/BATTERY LIFE LIGHT
Indicates power level

PISTOL GRIP
Comfortable, balanced control

uVision™ 365 DELUXE Models*

THERMAL CUT-OFF CIRCUITRY
Prevents lamp from going out of compliance when internal temperature exceeds specifications
**(SBLC model only)*

FANLESS DESIGN
Maintains optimum lamp temperature using state-of-the-art heat sinks

uVision™ 365 ECONOMY Models

IP65 rated, compact, LED UV-A inspection lamps. Available in two different intensities. These cost-effective inspection lamps can be used in nondestructive evaluation, forensics, and security inspections.

- ▶ **3 UV-A LEDS** for wide area of coverage
- ▶ **WHITE LIGHT LED** allows for scanning surface flaws (not adjustable)
- ▶ **LONG-LASTING UV-A LENSES** reduce the rate of solarization
- ▶ **SEALED CONTROL SWITCH** grip-mounted, three-way rocker switch (white light/off/UV)
- ▶ **PISTOL GRIP** comfortable, balanced control
- ▶ **FANLESS DESIGN** maintains optimum lamp temperature using state-of-the-art heat sinks



Vintage™ 365

Handheld LED UV-A Inspection Lamp

The **Vintage™ 365 SPN-VIN365** is a pistol-grip lamp, with an external design based on Spectrolines best-selling classic HID-bulb lamps. Although the housing of the lamp showcases a throw-back design, the internal hardware is comprised of modern LED UV-A technology. The Vintage™ operates two powerful UV-A LEDs, providing a wide, uniform beam. Its nominal steady-state intensity is 5,500 $\mu\text{W}/\text{cm}^2$ at 15 inches (38 cm). The coverage area encompasses a large 6 inch (15.2 cm) diameter at 15 inches (38 cm), with a minimum UV-A intensity of 1,200 $\mu\text{W}/\text{cm}^2$.

| | | SPN-VIN365 |
|-------------------------|--|---------------------------------|
| MEETS SPECIFICATIONS | EN ISO 3059 | ✓ |
| | Nominal Steady-State UV-A Intensity at 15 in (38 cm) [⊗] | 5,500 $\mu\text{W}/\text{cm}^2$ |
| | UV-A Coverage Area at 15 in (38 cm) at minimum 1,200 $\mu\text{W}/\text{cm}^2$ | 6 in (15.2 cm) Diameter |
| | Visible Light Measurement | < 1 foot-candles (< 11 lux) |



Technical Features

| | |
|--------------------------------|---|
| Light Source: | (2) UV-A (365 nm) LEDs |
| Lamp Style: | Pistol Grip |
| Dimensions (L x W x H): | 7.1 x 5.0 x 9.5 in (18 x 12.7 x 24.1 cm) |
| Weight: | 2.1 lbs (0.95 kg) |
| Power Requirements: | AC power (main AC power cord supplied with the unit)* |
| Cooling System: | Fanless |

* (Also available in 100-120V and 220-240V versions)

⊗ UV-A intensity reading taken with the Spectrolines AccuMAX™ Series meter, and is factory set to the value shown.

Replacement Parts and Accessories

| IMAGE | PART # | DESCRIPTION |
|---|----------|----------------------|
|  | RP-FP-01 | Filter assembly |
|  | RP-L-01 | Lens replacement set |



CLASSIC DESIGN
MODERN TECHNOLOGY
ECONOMIC PRICE

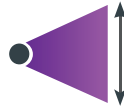




Vintage Ergonomic Design



Cost Effective



Wide Beam Profile



Fanless Design



CONTROL SWITCH

Grip-mounted, rocker switch

2 LONG-LASTING LEDS PROTECTED BY LENSES

Wide coverage, reduced rate of solarization




CLASSIC PISTOL GRIP

Comfortable, balanced control

TRITAN™ 365 SERIES

LED UV-A Handheld Lamps

TRITAN™ 365 SERIES NDT lamps are Spectroline's signature inspection lamps, and are used around the world for reliable inspections. TRITAN™ lamps feature three hi-flux UV-A (365 nm) LEDs for fluorescent inspection, plus a convenient white light LED to locate surface flaws and illuminate dark work areas. Their broad-beam configuration provides an extremely wide coverage area, while a compact head design allows access into areas inaccessible to larger UV inspection lamps.

| | | TRI-365SBLC* | TRI-365HC | TRI-365HB | TRI-365DB* | TRI-365MHB | TRI-365MDB* |
|--|--|---|---------------------------|---------------------------|---------------------------|---------------------------|-------------------------|
| TESTED TO COMPLY WITH |  Rolls-Royce RRES 90061 REQUIREMENTS | ✓ | ✗ | ✗ | ✗ | ✗ | ✗ |
| |  ASTM E3022-15 STANDARD | ✓ | ✓ | ✗ | ✗ | ✗ | ✗ |
| |  EN ISO 3059 | ✓ | ✓ | ✓ | ✓ | ✓ | ✓ |
| Nominal Steady-State UV-A Intensity at 15 in (38 cm) | | 4,500 µW/cm² | 7,000 µW/cm² | 9,000 µW/cm² | < 5,000 µW/cm² | 9,000 µW/cm² | < 5,000 µW/cm² |
| UV-A Coverage Area at 15 in (38 cm) at minimum 1,200 µW/cm² | | 5.5 in (14 cm) Diameter | 6 in (15 cm) Diameter | 6.5 in (16.5 cm) Diameter | 5.5 in (14 cm) Diameter | 6.5 in (16.5 cm) Diameter | 5.5 in (14 cm) Diameter |
| Filter/Faceplate | | Faceplate with integral UV-A pass filters | | | Standard faceplate | | |
| Thermal Cut-Off Circuitry | | ✓ | | | ✗ | | |
| AC/DC Mobile Model | | | | ✗ | | | ✓ |
| Visible Light Measurement | | 0.5 foot-candles (5 lux) | < 1 foot-candles (11 lux) | | < 2 foot-candles (22 lux) | | |

*These versions are adjusted to ensure that they provide a maximum steady-state UV-A intensity of less than 5,000 µW/cm² at 15 in (38 cm) UV-A intensity reading taken with the Spectroline® AccuMAX™ Series meter, and is factory set to the value shown.

Each lamp is fitted with an 8-foot cord and the appropriate plug for the country of destination. An optional 20-foot cord is available. The "/20" suffix denotes the 20-foot power cord options.



Technical Features

| | | | |
|----------------------------|------------------------------------|-----------------------------------|--|
| Light Source: | (3) UV-A LEDs, (1) white light LED | White Light LED Intensity: | 400 foot-candles (4,306 lux) |
| Lamp Style: | Pistol grip | Power Requirements: | 100-120VAC / 12VDC* |
| Lamp Head Diameter: | 3.25 in (8.25 cm) | Battery Pack: | Type: 12V, NiMH (rechargeable) Run time: 3.5 hours continuous Charge time: 2 hours |
| Height: | 8 in (20.3 cm) | Cooling System: | Built-in fan |
| Weight: | 1 lb (454 g) | | |

**(Also available in 230V & 240V versions)*

 **Compliant Versions***

 **3 UV-A LEDs
1 White Light LED**

 **Broad-Beam Configuration**

 **Lightweight**



LONG-LASTING UV-A LENSES
Reduce the rate of solarization

RUBBER BUMPER
With Borofloat® glass lens protects LEDs from damage

BUILT-IN FANS
Maintains optimum light output

WHITE LIGHT LED
Use to locate surface flaws

THERMAL CUT-OFF CIRCUITRY
Prevents lamp from going out of compliance when internal temperature exceeds specifications
**(SBLC model only)*

Faceplate with INTEGRAL UV-A PASS FILTERS
Reduce visible wavelengths
**(SBLC and HC models only)*

EASY CONTROL
Grip-mounted, three-way rocker switch (white light/off/UV)

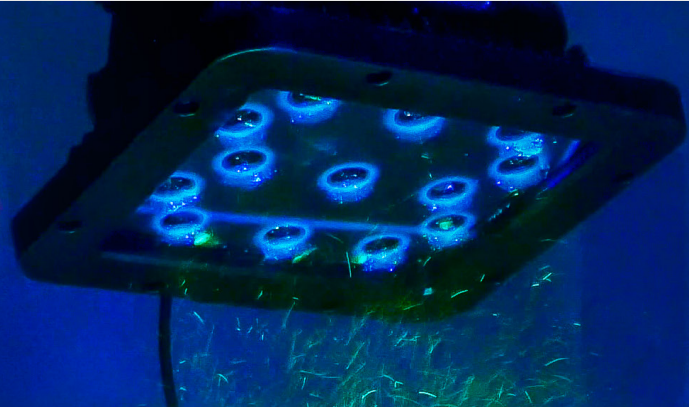


**127955
STANDARD FACEPLATE**



**128196
FACEPLATE WITH INTEGRAL UV-A PASS FILTERS**
**(SBLC and HC models only)*

TWO REPLACEABLE CORD CHOICES
Standard or extra-long with AC plug and rubber boot



EDGE™ 13 SERIES

LED UV-A Panel Flood Lamps

Get an **EDGE** on your overhead inspections with the newest flood lamp series from Spectroline®, the **EDGE™ 13 SERIES**. Designed specifically for NDT professionals who require a reliable and rugged overhead UV-A LED lamp for large parts inspection, these **IP65** rated panel lamps are dust-tight and protected against jets of water from all angles. Expand coverage by connecting lamps together via gang ports. Fanless cooling means fewer headaches. The only overhead NDT lamp series that has all of these features and comes in a RRES-90061 model.

| | | EDG-13SBLC | EDG-13T | EDG-13HC | EDG-13H |
|-----------------------|--|---------------------------------|---------------------------------|---------------------------------|----------------------------------|
| TESTED TO COMPLY WITH | Rolls-Royce RRES 90061 REQUIREMENTS | ✓ | ✗ | ✗ | ✗ |
| TESTED TO COMPLY WITH | ASTM E3022-15 STANDARD | ✓ | ✗ | ✓ | ✗ |
| MEETS SPECIFICATIONS | EN ISO 3059 | ✓ | ✓ | ✓ | ✓ |
| | Nominal Steady-State UV-A Intensity at 15 in (38 cm) | 4,700 $\mu\text{W}/\text{cm}^2$ | 6,500 $\mu\text{W}/\text{cm}^2$ | 8,500 $\mu\text{W}/\text{cm}^2$ | 15,000 $\mu\text{W}/\text{cm}^2$ |
| | UV-A Coverage Area at 15 in (38 cm) at minimum 1,200 $\mu\text{W}/\text{cm}^2$ | 14.5 x 13 in (37 x 33 cm) | 17 x 15 in (43 x 38 cm) | 24 x 22 in (61 x 56 cm) | 18 x 16 in (46 x 41 cm) |
| | Filter | Integral UV-A pass filters | Clear filter | | |
| | Thermal Cut-Off Circuitry | ✓ | ✗ | | |
| | Visible Light Measurement | < 1 foot-candles (11 lux) | | | < 2 foot-candle (22 lux) |

UV-A intensity reading taken with the Spectroline® AccuMAX™ Series meter, and is factory set to the value shown.



Technical Features

| | | | |
|--------------------------------|----------------------------------|----------------------------|---|
| Light Source: | (13) UV-A LEDs | Weight: | 14 lb (6.4 kg) |
| Lamp Style: | Panel flood lamp | Power Requirements: | AC power (main AC power cord supplied with the unit)* |
| Dimensions (L x W x H): | 11 x 14 x 9 in (28 x 36 x 23 cm) | Cooling System: | Fanless |

**(Also available in 100-120V, 230V and 240V versions)*



Compliant Versions*

IP65 RATED



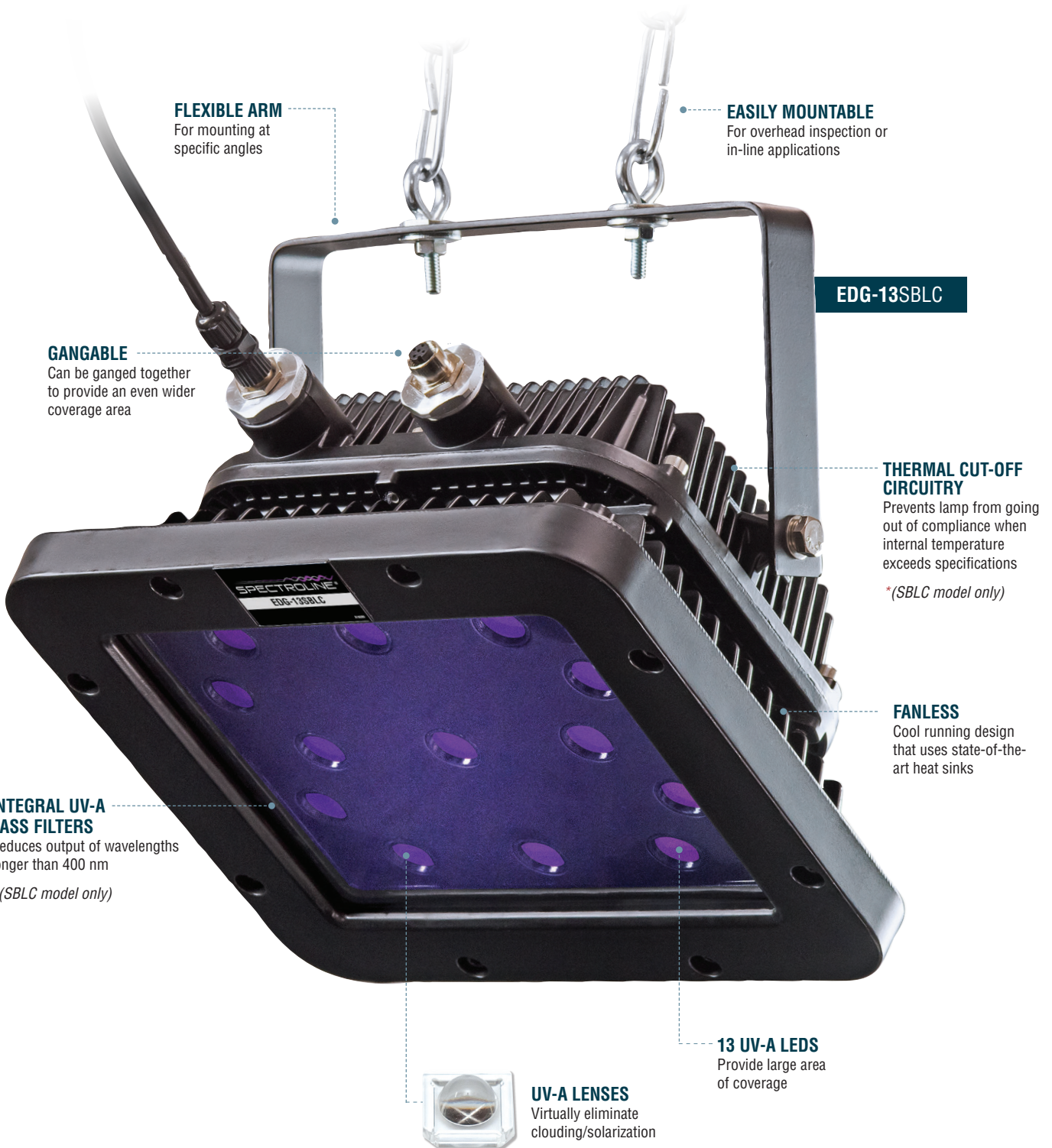
Dust-Tight & Water Resistant



NDT Inspection Booths



Large Parts Inspection



FLEXIBLE ARM
For mounting at specific angles

EASILY MOUNTABLE
For overhead inspection or in-line applications

EDG-13SBLC

GANGABLE
Can be ganged together to provide an even wider coverage area

THERMAL CUT-OFF CIRCUITRY
Prevents lamp from going out of compliance when internal temperature exceeds specifications
**(SBLC model only)*

FANLESS
Cool running design that uses state-of-the-art heat sinks

INTEGRAL UV-A PASS FILTERS
Reduces output of wavelengths longer than 400 nm
**(SBLC model only)*

13 UV-A LEDs
Provide large area of coverage





UV-A LENSES
Virtually eliminate clouding/solarization

**SPRAY &
INSPECT IN
ONE
SIMPLE STEP!**

CLARITY™ 365 SERIES

LED UV-A Inspection Flashlights

The **Clarity™ 365 SERIES** is the **highest quality, longest running, COMPLIANT** LED UV-A flashlight in the world! The IP68-rating means that it can withstand continuous immersion in one meter of water, making it ideal for rough environments. The 9-hour battery life is enough for a full work shift, making it the longest-running NDT flashlight on the market. Standing up to strict NDT standards, this product provides all of the top features including an induction charging base (lithium-ion version).

| | | SPN-CLR365-HC | SPN-CLR365-SC | SPN-CLR-BHA | SPN-CLR-BA |
|---|---|----------------------------------|--------------------------|------------------------------|--------------------------|
| TESTED TO COMPLY WITH |  ASTM E3022-18 STANDARD | ✓ | ✓ | ✓ | ✓ |
| |  EN ISO 3059 | ✓ | ✓ | ✓ | ✓ |
| Nominal Steady-State UV-A Intensity at 15 in (38 cm) * | | 6,500 μW/cm ² | 4,500 μW/cm ² | 6,500 μW/cm ² | 4,500 μW/cm ² |
| UV-A Coverage Area at 15 in (38 cm) at minimum 1,000 μW/cm² | | 3 in (7.62 cm) | 4 in (10.1 cm) | 3 in (7.62 cm) | 4 in (10.1 cm) |
| Filter | | Integral UV-A pass filters | | | |
| Visible Light Measurement | | < 1 foot-candles (11 lux) | | | |
| Battery Type | | Lithium-Ion Rechargeable Battery | | Alkaline Battery (3 C-cells) | |

* UV-A intensity reading taken with the Spectroline® AccuMAX™ Series meter, and is factory set to the value shown.



Technical Features

| | |
|----------------------------|------------------------------|
| Light Source: | (1) UV-A LED |
| Lamp Style: | Cordless flashlight |
| Lamp Head Diameter: | 1 in (2.6 cm) |
| Length: | 7 in (17.8 cm) |
| Weight: | 0.8 lbs (363 g) with battery |
| Run Time: | 9 hours (continuous) |
| Charge Time: | 6 Hours |

SPN-CLR365-HC & SPN-CLR365-SC (Lithium-Ion Battery)

SPN-CLR-BHA & SPN-CLR-BA (Alkaline Battery)

| | |
|----------------------------|----------------------|
| Light Source: | (1) UV-A LED |
| Lamp Style: | Cordless flashlight |
| Lamp Head Diameter: | 1.75 in (4.5 cm) |
| Length: | 8.75 in (22.2 cm) |
| Weight: | 1.2 lbs (544.3 g) |
| Run Time: | 9 hours (continuous) |
| Charge Time: | N/A |



Longest Battery Life on the Market



Auto Shut-Off



Water-Proof, Dust-Proof



Wireless Induction Charger*

**Lithium Ion model only*

LONG-LASTING UV-A LED
Protected by lens

CHARGING INDICATOR

RUGGED, DURABLE METAL HOUSING

UV-A PASS FILTER

RECHARGEABLE BATTERY



CLARITY Spray Mount Accessory # RP-SM-01

Specially crafted lamp attachment permits lamp and spray can to be mounted together for convenient, single-handed fluorescent yoke inspection.

INDUCTION CHARGER*

Stands on table, lamp is charged wirelessly

**Lithium Ion model only*



**SPN-CLR365-HC
SPN-CLR365-SC**

Flashlight with battery, induction charging dock, AC power cord, USB power cord, belt holster, UV-absorbing spectacles, comes in carrying case.



**SPN-CLR-BHA
SPN-CLR-BA**

Flashlight with 3 C-cell alkaline batteries, belt holster, UV-absorbing spectacles and carrying case.

OPTI-LUX™ 365 SERIES

LED UV-A Inspection Flashlights

OPTI-LUX™ 365 SERIES inspection flashlights feature a powerful UV-A (365 nm) LED light source coupled with a rugged anodized lamp body. They reduce user fatigue while providing an extremely uniform beam profile that surpasses those of more expensive lamps. Available in four models to suit your specific NDT needs: high-intensity or standard-intensity versions, each with or without an internal UV-A pass filter. Comes with a Certificate of Light Output for both wavelength and output measurements.

| | OLX-365 | OLX-365B | OLX-365FL | OLX-365BFL |
|--|----------------------------|----------------------------|----------------------------|----------------------------|
| MEETS REQUIREMENTS EN ISO 3059 | ✓ | ✓ | ✓ | ✓ |
| Nominal Steady-State UV-A Intensity at 15 in (38 cm) | 10,000 µW/cm² | | 4,500 µW/cm² | |
| UV-A Coverage Area at 15 in (38 cm) at minimum 1,200 µW/cm² | 2 in (5 cm) Diameter | | 2.5 in (6.3 cm) Diameter | |
| Filter/Faceplate | Clear filter | UV-A pass filter | Clear filter | UV-A pass filter |
| Visible Light Measurement | 0.8 foot-candles (8.6 lux) | 0.4 foot-candles (4.3 lux) | 0.3 foot-candles (3.2 lux) | 0.2 foot-candles (2.1 lux) |

UV-A intensity reading taken with the Spectroline® AccuMAX™ Series meter, and is factory set to the value shown.



OPTI-LUX™ 365 SERIES Flashlight Kit

Come complete with OPX-365 LED UV-A (365 nm) lamp with lanyard, two rechargeable batteries, smart charging cradle with AC and DC cord sets, UV-absorbing spectacles, belt holder and a hard carrying case.

Technical Features

| | | | |
|----------------------------|-----------------------------|--|---|
| Light Source: | (1) UV-A LED | Power Requirements: | (1) 3.7V 2600mA/Hr lithium-ion battery (rechargeable) |
| Lamp Style: | Cordless flashlight | Run Time: | 4 hours (continuous) |
| Lamp Head Diameter: | 1.25 in (3.2 cm) | Charge Time: | 4 hours (one or two batteries) |
| Length: | 5.9 in (15 cm) | Charging Cradle: | Two-battery capability with AC and DC cord sets* |
| Weight: | 4.6 oz (130 g) with battery | *Also available in 100-120V, 230V & 240V versions) | |



Rechargeable Li-ION Battery



Bright & Uniform Beam



Instant-on Operation



Small Space Inspection

CONVENIENT ON/OFF SWITCH

For easy one-handed operation



ANODIZED ALUMINUM LAMP BODY

Minimizes corrosion and stands up to years of heavy use

BF-365LX
External UV-A pass filter accessory



OPTIMAX™ 365

LED UV-A Inspection Flashlight

The cordless **OPTIMAX™ 365 OPX-365** is ergonomic, compact and lightweight. It's designed to provide ultimate freedom of movement during inspections. With an ultra-high-intensity output, it's our most powerful UV-A (365 nm) LED flashlight.

| | OPX-365 |
|---|----------------------------------|
| Nominal Steady-State UV-A Intensity at 15 in (38 cm) | 18,000 $\mu\text{W}/\text{cm}^2$ |
| UV-A Coverage Area at 15 in (38 cm) at minimum 1,200 $\mu\text{W}/\text{cm}^2$ | 2.5 in (6.3 cm) Diameter |
| Visible Light Measurement | < 2 foot-candles (22 lux) |

Technical Features

| | |
|----------------------------|--|
| Light Source: | (1) UV-A LED |
| Lamp Style: | Cordless flashlight |
| Lamp Head Diameter: | 2 in (5.1 cm) |
| Length: | 8 in (20.3 cm) |
| Weight: | 11.8 oz (335 g) with battery |
| Power Requirements: | 3.6V, 2.0Ah NiMH internal battery stick (rechargeable) |
| Run Time: | 90 minutes (continuous) |
| Charge Time: | 4 hours |

UV-A intensity reading taken with the Spectroline® AccuMAX™ Series meter, and is factory set to the value shown.



Rechargeable NiMH Battery



Bright & Uniform Beam



Instant-on Operation



90 Minutes Run Time

ANODIZED ALUMINUM LAMP BODY

Minimizes corrosion and stands up to years of heavy use

CONVENIENT ON/OFF SWITCH

For easy one-handed operation



CHARGE STATUS INDICATOR LIGHT

ELECTRONIC INTENSITY STABILIZER

Assures consistent performance

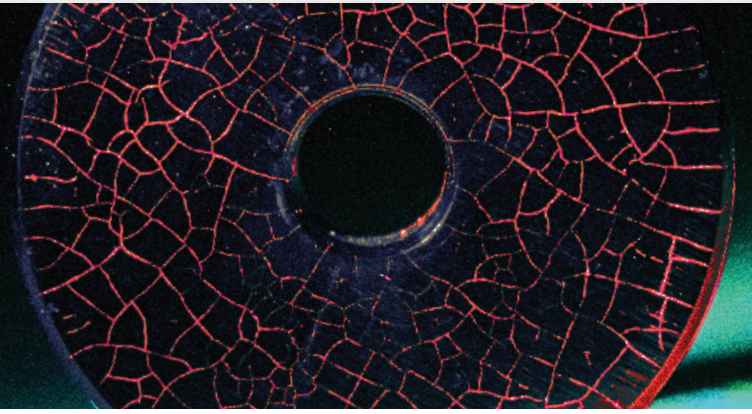


OPX-365 OPTIMAX™ 365 Kit

Comes complete with OPTIMAX™ 365 (365 nm) lamp, smart AC and DC chargers, UV-absorbing spectacles, belt holder and hard carrying case. AC charger available in 120V, 230V, 240V or 100V versions.

TRITAN™ 450 SERIES

LED Blue Light Handheld Inspection Lamps



Features three cool-running, ultra-high flux blue light (450 nm) LEDs with a broad-beam configuration. This powerful lamp provides a wider coverage area than conventional inspection lamps, while its compact head design allows access into areas inaccessible to larger inspection lamps. Ideal for most nondestructive testing applications, including use in some ambient light conditions!

| | TRI-450B | TRI-450MB |
|-----------------------------|---|---------------------------------|
| MEETS SPECIFICATIONS | ✓ | |
| | Nominal Steady-State Blue Light Intensity at 15 in (38 cm)* | 9,500 $\mu\text{W}/\text{cm}^2$ |
| | Blue Light Coverage Area at 15 in (38 cm) at minimum 2,000 $\mu\text{W}/\text{cm}^2$ | 5 in (13 cm) Diameter |



Technical Features

| | |
|----------------------------|---|
| Light Source: | (3) Blue light LEDs |
| Lamp Style: | Pistol grip |
| Lamp Head Diameter: | 3.25 in (8.25 cm) |
| Length: | 8 in (20.3 cm) |
| Weight: | 1 lb (454 g) with battery |
| Power Requirements: | TRI-450B: 100-120VAC TRI-450MB: 100-120VAC/12VDC (Also available in 230V & 240V versions) |
| Battery Pack: | Type: 12V, NiMH (rechargeable) Run time: 3.5 hours continuous Charge time: 2 hours |

*Blue Light intensity reading taken with the Spectroline® AccuMAX™ Series meter, and is factory set to the value shown.

Each lamp is fitted with an 8-foot cord and the appropriate plug for the country of destination. An optional 20-foot cord is available. The "20" suffix denotes the 20-foot power cord options.



Broad-Beam Configuration



Cool Running



Instant-on Operation



Works In Daylight!



BLUE LIGHT LED

3 BLUE LIGHT LEDS

For wide area of coverage

PATENTED, THIN-FILM DICHOIC LENS

With rubber bumper protects LEDs from damage, improve contrast and fluorescent response

BUILT-IN FANS

Maintains optimum light output

TWO REPLACEABLE CORD CHOICES

Standard or extra-long with AC plug and rubber boot



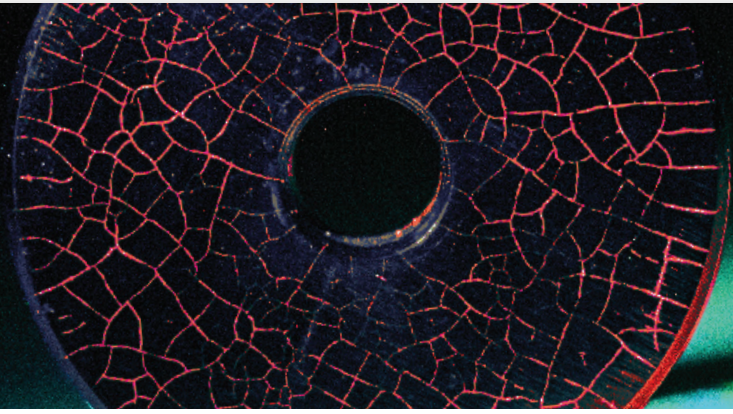
TRI-450MB TRITAN™ 450MB Kit

Portable, battery-operated AC/DC lamp kit. Includes TRITAN™ 450 LED blue light lamp, rechargeable NiMH battery pack, power supply adapter with AC/DC cord sets, smart AC charger, fluorescence-enhancing yellow spectacles and padded carrying case.



OPTIMAX™ 450

Rechargeable LED Blue Light Flashlight



The **OPTIMAX™ 450 OPX-450** is a versatile, cordless inspection lamp, featuring a high-intensity blue light (450 nm) LED. The anodized aluminum lamp body minimizes corrosion and stands up to years of heavy use, and our patented, thin-film dichroic lens filters out long-wave visible light. Electronic Intensity Stabilizer assures consistent performance. Beam strength will not weaken between charges. Powered by a rechargeable NiMH battery. Provides 90 minutes of continuous inspection between charges.

| | | OPX-450 |
|-----------------------------|---|---------------------------------|
| MEETS SPECIFICATIONS | CEN/TR 16638 | ✓ |
| | Nominal Steady-State Blue Light Intensity at 15 in (38 cm) | 7,000 $\mu\text{W}/\text{cm}^2$ |
| | Blue Light Coverage Area at 15 in (38 cm) at minimum 2,000 $\mu\text{W}/\text{cm}^2$ | 3 in (7.6 cm) Diameter |




Technical Features

| | |
|----------------------------|--|
| Light Source: | (1) Blue light LED |
| Lamp Style: | Cordless flashlight |
| Lamp Head Diameter: | 2 in (5.1 cm) |
| Length: | 8 in (20.3 cm) |
| Weight: | 11.8 oz (335 g) with battery |
| Power Requirements: | 3.6V, 2.0Ah NiMH internal battery stick (rechargeable) |
| Run Time: | 90 minutes (continuous) |
| Charge Time: | 4 hours |

Blue Light intensity reading taken with the Spectroline® AccuMAX™ Series meter, and is factory set to the value shown.



Accessories

| IMAGE | PART # | DESCRIPTION |
|---|-----------------|---|
|  | RB-300 | Smart AC charger (120V/60Hz)* |
|  | RB-300DC | 12V DC charger |
|  | UVS-40 | Fluorescence-enhancing spectacles, yellow |

*Also available in 230V, 240V, and 100V versions



Rechargeable NiMH Battery



Bright & Uniform Beam



Instant-on Operation



90 Minutes Run Time



Works In Daylight!

ANODIZED ALUMINUM LAMP BODY

Minimizes corrosion and stands up to years of heavy use

CONVENIENT ON/OFF SWITCH

For easy one-handed operation



PATENTED, THIN-FILM DICHOIC LENS

Improve contrast and fluorescent response



CHARGE STATUS INDICATOR LIGHT

ELECTRONIC INTENSITY STABILIZER

Assures consistent performance



OPX-450 OPTIMAX™ 450 Kit

Comes complete with OPTIMAX™ 450 LED blue light lamp, smart AC and DC chargers, fluorescence-enhancing yellow spectacles, belt holder and rugged, hard carrying case.

MAXIMA™ 3500 SERIES

Ultra-High-intensity UV-A Lamps

These super-powerful **MAXIMA™ 3500 SERIES** lamps make NDT inspections easy. They feature micro discharge light (MDL) technology with a fatigue-free ergonomic design. Deliver up to 10 times the UV-A output of conventional HID inspection lamps. They have a lightweight, solid-state ballast and integral bulb/reflector assembly. Stay-cool, impact-resistant and dent-proof housing. Prefocused at the factory.

| | ML-3500S | ML-3500FL | ML-3500MS |
|---|----------------------------------|---------------------------------|----------------------------------|
| Nominal Steady-State UV-A Intensity at 15 in (38 cm) | 50,000 $\mu\text{W}/\text{cm}^2$ | 5,700 $\mu\text{W}/\text{cm}^2$ | 50,000 $\mu\text{W}/\text{cm}^2$ |
| UV-A Coverage Area at 15 in (38 cm) at minimum 1,200 $\mu\text{W}/\text{cm}^2$ | 6 in (15 cm) Diameter | | |
| Ultra-High-intensity Output | ✓ | | |
| Reflector Assembly | Spot reflector | Flood/anodized reflector | Spot reflector |
| Battery-Powered, Mobile Model | ✗ | | ✓ |

UV-A intensity reading taken with the Spectrolin® AccuMAX™ Series meter, and is factory set to the value shown.
*These versions are adjusted to ensure that they provide a maximum steady-state UV-A intensity of less than 5,000 $\mu\text{W}/\text{cm}^2$ at 15 in (38 cm)



Ultra-High-Intensity Output



Extra Wide Coverage



Very Bright Beam



Works In Daylight!



SUPERFLOOD™ SERIES

Our Most Powerful UV-A Flood Lamps

The super-powerful and versatile **SUPERFLOOD™ SERIES** has been specially engineered for fluorescent penetrant and magnetic particle inspection, parts degreasing inspections and wash station inspections. Powerful 400-watt metal halide bulb, combined with tempered, heat-resistant low solarization UV filters provide the highest intensity over the largest area.

TWIN-FILTER SYSTEM

Eliminates hazardous UV-B and UV-C radiation escaping from lamp

POWERFUL

400-watt metal halide bulb with tempered, heat-resistant low solarization UV filters



EASY BUILT-IN MOUNT

Attach unit over automated magnetic particle systems or above penetrant inspection booths

| | UV-400A | UV-400B |
|--|---|---|
| Nominal Steady-State UV-A Intensity at 15 in (38 cm) ⓘ | 8,000 $\mu\text{W}/\text{cm}^2$ | 5,000 $\mu\text{W}/\text{cm}^2$ |
| UV-A Coverage Area at 15 in (38 cm) at minimum 2,000 $\mu\text{W}/\text{cm}^2$ | 16 x 10 in (41 x 25 cm) | 27 x 15 in (69 x 38 cm) |
| UV-A Coverage Type | Features a concentrated-beam reflector designed to assure the highest concentrated UV-A intensity available | Features a unique broad-beam reflector designed to provide NDT inspectors with maximum uniformity of coverage over the largest area |

ⓘ UV-A intensity reading taken with the Spectroline® AccuMAX™ Series meter, and is factory set to the value shown.



VIVID™ Replacement Bulb

- ▶ UV-A LED replacement bulb
- ▶ Convert your mercury vapor HID lamp to modern LED technology
- ▶ Use with Spectrolines® HID lamps instead of mercury vapor bulb!



Instant-on Operation
No wait time to get to full intensity



Fewer Bulb Changes



Safer
Over 50% cooler!
225°F vs. 109°F
(HID) (LED)



Environmental
Less environmental waste with fewer bulbs and energy efficient



BLE-LED-100



BLE-LED-150

INCLUDES BULB EXTENDER* for BIB-150P lamps (120V)

P/N *129585



BLE-LED-150/F

INCLUDES BULB EXTENDER* for BIB-150P/F lamps (230V)

P/N *130245

| Part # | Nominal Steady-State UV-A Intensity at 15 in (38 cm) | UV-A Coverage Area at 15 in (38 cm) at minimum 1,200 μW/cm² | Visible Light Measurement |
|---|--|---|---------------------------|
| BLE-LED-100 BLE-LED-150 BLE-LED-150/F | 4,700 μW/cm² (tested with 2F958 filter) | 4.5 in (12 cm) Diameter | < 1 foot-candle (11 lux) |

Works **seamlessly** in conjunction with the following Spectrolines® HID lamps, saving you *both* time and money on bulb changes:



| Lamp | Current Bulb Type | Replacement Vivid Bulb |
|-------------------|-------------------|------------------------|
| SB-100P SERIES | 100S/M HID Bulb | BLE-LED-100 |
| FC-100 SERIES | 100S/M HID Bulb | |
| BIB-150P SERIES | BLE-150CS-115/M | BLE-LED-150 |
| | BLE-150BS-115/M | |
| | BLE-150CS-100/M | |
| BIB-150P/F SERIES | BLE-150CS-230/M | BLE-LED-150/F |
| FC-150/F SERIES | BLE-150FC-230/M | |

COMES WITH PATENTED BULB-SAVER™

Keeps bulb upright in housing and maintains alignment through usage, increasing longevity.

UV PROTECTIVE EYE AND FACE WEAR

FACESHIELDS AND PROTECTIVE GOGGLES - Essential accessories for all NDT and UV work

- ▶ Designed for long wearing comfort and to protect the user against most ultraviolet light sources
- ▶ improves contrast between the fluorescent area and the background by eliminating the “blue haze” interference
- ▶ Goggles and face shield meet ANSI specifications and OSHA standards
- ▶ UVS-30 spectacles, generally recommended for sporadic, lower intensity UV sources fit easily over eyeglasses
- ▶ UVF-80 face shield, for maximum protection from extended or high intensity UV exposure, adjusts to fit the face



UVS-30
UV-absorbing Spectacles

UVS-40
Fluorescence-enhancing
Spectacles



UVG-50
UV-absorbing Goggles

UVF-80
UV-absorbing Face shield



Sample Certificates of Conformance & Validation Reports

Our NDT inspection lamps come with unique Certificates of Conformance and Validation Reports, so end-users know that their lamps meet industry requirements and standards.

Intensity readings are taken with a Spectroline® AccuMAX™ Series meter, and is factory set to the value shown.



We stay one step ahead of **industry trends** and **technological innovation** to ensure you get the most rugged, comfortable, compliant lamps available today.

SPECTROLINE®
Validation Report

MODEL NUMBER: UV-365MSBL
STANDARD: RRES-90061

SERIAL NUMBER:
PART NUMBER:

| TEST DESCRIPTIONS | PARAMETERS | TYPE TEST | NOMINAL | UNIT TEST |
|--------------------------|--|--|--|--|
| Minimum Working Distance | 5,000 µm/cm ² | NA | 11 inches (28.1 cm) | NA |
| Maximum Working Distance | 3,200 µm/cm ² | NA | 33 inches (84.1 cm) | NA |
| Peak Wavelength | 365 ±1.5 nm | 367 ±1.2 nm | 367 ±1.2 nm | 368 ±1.2 nm |
| 50% Max @ 20 nm | 10 ±1.5 nm | 10 ±1.5 nm | 10 ±1.5 nm | 10 ±1.5 nm |
| 50% Max @ 30 nm | 20 ±1.5 nm | 20 ±1.5 nm | 20 ±1.5 nm | 20 ±1.5 nm |
| 50% Max @ 40 nm | 30 ±1.5 nm | 30 ±1.5 nm | 30 ±1.5 nm | 30 ±1.5 nm |
| 50% Max @ 50 nm | 40 ±1.5 nm | 40 ±1.5 nm | 40 ±1.5 nm | 40 ±1.5 nm |
| Wavelength OVR | 360nm to 370nm | Acceptable | Acceptable | Acceptable |
| Visible Light Output | <20 µW at Minimum Dist <10 µW at Maximum Dist | 2.15 µW (0.205 µW/cm ²) | 2.15 µW (0.217 µW/cm ²) | 2.15 µW (0.217 µW/cm ²) |
| Output Stability | ±1.5% (repeatability, 30s) <0.5% (variation over 60 mins) | NA | 25 minutes | 30 minutes |
| Ambient Temperature | 10 degrees C to 50 degrees C | 20 degrees C | 20 degrees C | 20 degrees C |
| Source Life* | 7,500 hr (50k cycles) 7,500 hr (50k cycles) | 7,500 hr 30,000 Hours | 7,500 hr 30,000 Hours | NA |

Inspector: Steve Brand - Quality Manager
Date: 7/2022 AM3702-0

4 Duxon Ct., Farmingdale, NY 11735 • PHONE: 866-230-7395 • WWW.SPECTRO-UV.COM

SPECTROLINE®
Certificate of Conformance

MODEL NUMBER: UV-365MSBL
STANDARD: ASTM E3022, Type A

SERIAL NUMBER:
PART NUMBER:

| APPARATUS & MANUFACTURER | MODEL NUMBERS |
|--------------------------|-----------------------------|
| Spectroradiometer (B.2) | StarNet UV102-25, With B-25 |
| Spectrophotometer (B.8) | StarNet UV102-25, With B-25 |

| LAMP ACCEPTANCE TEST B.3 | Requirements | At Ambient (17 (62) F) |
|---|----------------------------|-----------------------------------|
| Maximum Irradiance (I ₀) | At 15 inches (38 cm) | (Irradiance, µW/cm ²) |
| Emission Spectrum (I ₀ A.6.6) | Wavelength range 300-800nm | See Figure A.6, Pg. 2 |
| Peak Wavelength (I ₀ A.6.7) | 365 ± 1.5 nm | nm |
| FWHM (I ₀ A.6.8) | ±1.5 nm | nm |
| Longest Wavelength at Half Maximum (I ₀ A.6.8) | <377nm | nm |
| UV-A LED Visible Measurement (550nm) at 15 in. (38cm) | 42 N (21 Lux) | Fc (Lux) |
| White LED Measurement (550nm) at 15 in. (38cm) | Maximum White Output | Fc (Lux) |
| | Minimum White Output | Fc (Lux) |

*All the test values above also meet the guidelines of ASTM E3022, Issue 12.**

Inspector: Steve Brand - Quality Manager
Date:

4 Duxon Ct., Farmingdale, NY 11735 • PHONE: 866-230-7395 • WWW.SPECTRO-UV.COM

SPECTROLINE®
Certificate of Light Output

This is to certify the UV-A lamp referenced below meets the output measurements (UV and visible) for LED UV-A light as well as producing a Peak Wavelength at 360 - 370 nm (365 ± 5 nm) as measured with a spectroradiometer, in accordance with ASTM NP1/LPI and EN ISO 3009:2012(12) requirements.

Product Name: **uvision™ 365 High Intensity Repair Series**
Product Number: **UV-365,RE1**
Serial Number: _____

The following measurements were obtained using a Spectroline® AccuMAX™ UV-1000 and NIS-1000 at 15" (38 cm) with either AC or battery-operated DC light at full charge.

UV-A LED Light Output
UV-A intensity reading @ 365 nm: _____ µW/cm²
Visible light reading @ 555 nm: _____ fc

WHITE LED Light Output
Visible light reading @ 555 nm: _____ fc

Inspector: Steve Brand
Required Date: _____

Steve Brand
Quality Manager
7/2022-AM1910-0

Rolls-Royce RRES 90061
Fully serialized **Validation Reports** provided with all RRES 90061 compliant lamps.

ASTM E3022-15
Certificates of Conformance as defined by ASTM E3022-15 standard for emission characteristics and requirements for LED UV-A lamps are supplied with each lamp.

EN ISO:3059 + Wavelength Compliance
Certificates of Light Output provided with each individual lamp with unique product serial number. These certify LED wavelength requirements and output measurements for each lamp at the factory.

ISO 9001:2008

Compliance with the ISO standard reinforces the confidence that customers have in Spectro-UV's commitment to quality, not only in the present but also in the future.

Warranty

All equipment is warranted against defects in manufacture. Spectro-UV's obligation under this warranty is limited to repairing or replacing, at the option of Spectro-UV, any part(s) of the product which, if properly installed, used and maintained, proves upon factory examination to have been defective in materials or workmanship within 12 months from the date of delivery to the customer, including LEDs and BLE-LED bulb.

This warranty does not apply to any component which (1) is normally consumed in operation or (2) has a normal life inherently shorter than the warranty stated. For example, bulb, filters and rechargeable batteries are warranted for 30 days; the 100S/M-PQL bulb is warranted for 90 days. In addition, Spectro-UV does not warrant any instrument that has been subjected to misuse, negligence or accident, or has been repaired or altered by anyone other than Spectro-UV.

This warranty is in place of all other warranties of quality. There are no other warranties either oral, written, express, implied or statutory. IMPLIED WARRANTIES OF FITNESS FOR PURPOSE AND MERCHANTABILITY ARE EXCLUDED. This warranty and your remedies thereunder are solely as stated in this form. In no event shall Spectro-UV be liable for special, indirect, incidental or consequential damages, nor for any damages arising out of delay in shipment or production.

Spectro-UV reserves the right to alter product specifications without notice. Spectro-UV is under no obligation to make similar changes in its products previously produced.



Order Information



Technical Assistance



Local Sales Representatives



Authorized Distributors

Product/Customer Support & Technical Assistance

Product literature, instructions and a full staff of trained customer service representatives and technical service engineers are available for support. Additional product information and support are available on our website.



Place an Order:
Orders@Spectro-UV.com



Get Support:
 Call (888) 230-7306

IMAGINING FOR TOMORROW:

We are excited to release several new, in-demand products very soon.
 Have some feedback or product ideas? Please reach out – we would love to hear from you.
 Email our team at sales@spectro-uv.com

Company Background

Spectro-UV is the global **leader of inventing and manufacturing ultraviolet and non-destructive testing materials**. The goal of Spectro-UV is to produce effective, top-quality products that are on the cutting edge of today's technology with the utmost dedication to customer satisfaction.

We have worked alongside NDT experts, engineers, product designers, and standards committee members to carefully develop our compliant lamps to meet the highest standards.



SPECTRO-UV HEADQUARTERS, FARMINGDALE, NY

HOME OF SPECTROLINE®, THE GLOBAL LEADER IN UV LIGHTS AND METERS



SPECTROLINE®

SOLUTIONS FOR NDT
FLUORESCENT INSPECTIONS.

PROUD MEMBERS OF:



www.Spectro-UV.com
4 Dubon Ct., Farmingdale, NY 11735
866-230-7305

FOLLOW US:



NDT
7/21 A18371-7
PRINTED IN USA